



673 N. Bardstown Rd  
Mount Washington, KY, 40047, US

Kaycha Labs

Delta8 Infused Topical Unscented - 1000mg  
N/A  
Matrix: Derivative



# Certificate of Analysis

Sample: MO01013023-001

Harvest/Lot ID: N/A

Seed to Sale #N/A

Batch Date :N/A

Batch#: 60001

Sample Size Received: 113 gram

Retail Product Size: 113 gram

Ordered : 10/13/20

Sampled : 10/13/20

Completed: 10/16/20 Expires: 10/16/21

Sampling Method: SOP Client Method

**PASSED**

Page 1 of 1

Oct 16, 2020 | The Helping Friendly Hemp Co.

2697 Locksley Ct  
Troy, UM-84, 48083, US

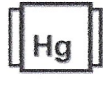


PRODUCT IMAGE SAFETY RESULTS

MISC.



Pesticides



Heavy Metals



Microbials



Mycotoxins



Residuals Solvents



Filtration



Water Activity



Moisture



Terpenes NOT TESTED

## CANNABINOID RESULTS



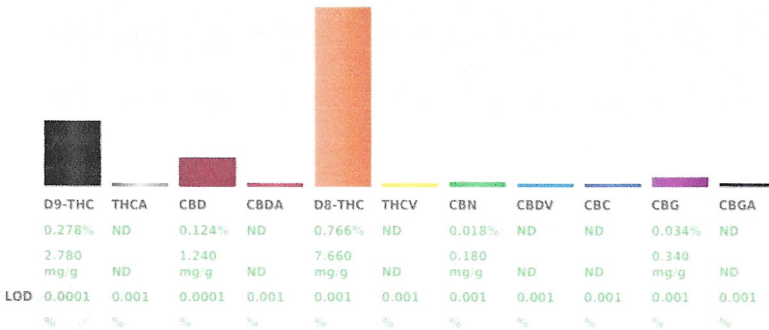
**Total THC**  
**0.278%**  
THC/Container :314.140 mg



**Total CBD**  
**0.124%**  
CBD/Container :140.120 mg



**Total Cannabinoids**  
**1.220%**  
Total Cannabinoids/Container :1378.600 mg



## Cannabinoid Profile Test

Analyzed by: 19 Weight: 2.9942g Extraction date: 10/13/20 03:10:25 Extracted By: 19  
Analysis Method -SOP.T.40.020, SOP.T.30.050 Reviewed On - 10/14/20 09:41:17 Batch Date : 10/13/20 15:26:43  
Analytical Batch -MD001258POT Instrument Used : HPLC Potency Analyzer Running On :

Reagent Dilution Consums. ID

Full spectrum cannabinoid analysis utilizing High Performance Liquid Chromatography with UV detection (HPLC-UV). (Method: SOP.T.30.050 for sample prep and Shimadzu High Sensitivity Method SOP.T.40.020 for analysis. LOQ for all cannabinoids is 1 mg/L. Measurement of Uncertainty: 2.7%.

This report shall not be reproduced, unless in its entirety, without written approval from Kaycha Labs. This report is an Kaycha Labs certification. The results relate only to the material or product analyzed. Test results are confidential unless explicitly waived otherwise. Void after 1 year from test end date. Cannabinoid content of batch material may vary depending on sampling error. IC=In-control QC parameter, NC=Non-controlled QC parameter, ND=Not Detected, NA=Not Analyzed, ppm=Parts Per Million, ppb=Parts Per Billion. Limit of Detection (LOD) and Limit of Quantitation (LOQ) are terms used to describe the smallest concentration that can be reliably measured by an analytical procedure. RPD=Reproducibility of two measurements. Action Levels are State determined thresholds for human safety for consumption and/or inhalation. The result >99% are variable based on uncertainty of measurement (UM) for the analyte. The UM error is available from the lab upon request. The "Decision Rule" for the pass/fail does not include the UM. The limits are based on F.S. Rule 61-4-310.

David Greene  
Lab Director  
State License # 19-05-02P  
ISO Accreditation #  
17025:2017 #97164

Signature

10/16/2020  
Signed On