



Black Tie

Sample 214-031422-173

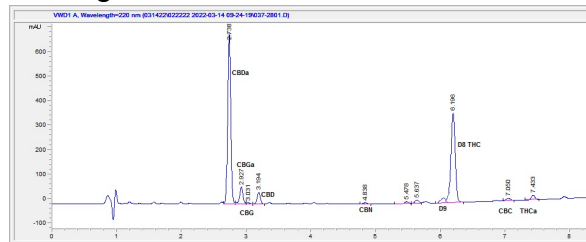
Delta 8 Infused Blueberry Pie

Sample Submitted: 03-14-2022; Report Date: 03-14-2022

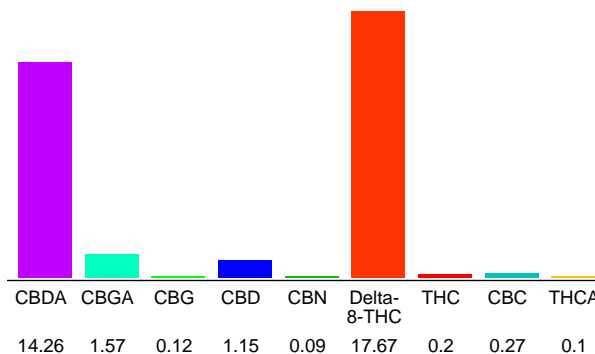
## Delta 8 Infused Blueberry Pie

Plant Material: Flower

### Chromatogram



### Cannabinoid Profile



### Cannabinoid Profile by HPLC

**0.29%**  
Calculated THC Yield

**13.66%**  
Calculated CBD Yield

**35.43%**  
Total Cannabinoids

Cannabinoid	% wt	mg/g
CBDA	14.26	142.6
CBGA	1.57	15.7
CBG	0.12	1.2
CBD	1.15	11.5
CBN	0.09	0.9
Delta-8-THC	17.67	176.7
THC	0.2	2.0
CBC	0.27	2.7
THCA	0.1	1.0
<b>Total Cannabinoids</b>	<b>35.43</b>	<b>354.3</b>
<b>Calculated THC Yield</b>	<b>0.29</b>	<b>2.88</b>
<b>Calculated CBD Yield</b>	<b>13.66</b>	<b>136.56</b>

Calculated Maximum THC Yield = THC + 0.877 \* THCA  
Calculated Maximum CBD Yield = CBD + 0.877 \* CBDA

**Marin Analytics, LLC**  
250 Bel Marin Keys Blvd, Suite D4  
Novato, CA 94949

415-936-6477 / sarabiancalana1@gmail.com

*Sara Biancalana*  
**Sara Biancalana**  
Chief Scientist

This sample has been tested by Marin Analytics, LLC using valid testing methodologies and a quality system. Values reported relate only to the sample tested. Marin Analytics, LLC makes no claims as to the efficacy, safety or other risks associated with any detected or non-detected levels of any compounds reported herein. This Certificate shall not be reproduced except in full, without the written approval of Marin Analytics, LLC.