



Black Tie

Sample 214-092922-286

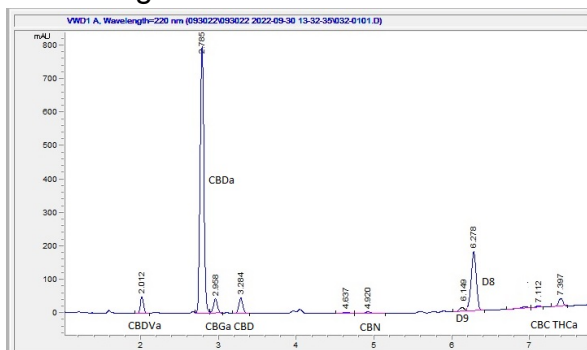
Delta 8 White Widow

Sample Submitted: 09-29-2022; Report Date: 09-29-2022

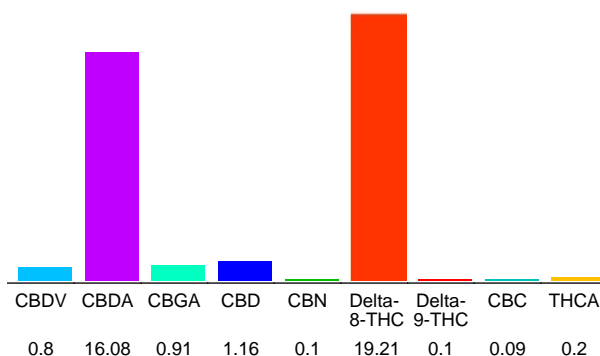
## Delta 8 White Widow

Plant Material: Flower

### Chromatogram



### Cannabinoid Profile



### Cannabinoid Profile by HPLC

**0.28%**  
Calculated Delta-9-THC Yield

**15.26%**  
Calculated CBD Yield

**38.65%**  
Total Cannabinoids

Cannabinoid	% wt	mg/g
CBDV	0.8	8.0
CBDA	16.08	160.8
CBGA	0.91	9.1
CBD	1.16	11.6
CBN	0.1	1.0
Delta-8-THC	19.21	192.1
Delta-9-THC	0.1	1.0
CBC	0.09	0.9
THCA	0.2	2.0
<b>Total Cannabinoids</b>	<b>38.65</b>	<b>386.5</b>
<b>Calculated Delta-9-THC Yield</b>	<b>0.28</b>	<b>2.75</b>
<b>Calculated CBD Yield</b>	<b>15.26</b>	<b>152.62</b>
Calculated Maximum Delta-9-THC Yield = Delta-9-THC + 0.877 * THCA		
Calculated Maximum CBD Yield = CBD + 0.877 * CBDA		

**Marin Analytics, LLC**  
250 Bel Marin Keys Blvd, Suite D4  
Novato, CA 94949

415-936-6477 / sarabiancalana1@gmail.com

*Sara Biancalana*  
**Sara Biancalana**  
Chief Scientist

This sample has been tested by Marin Analytics, LLC using valid testing methodologies and a quality system. Values reported relate only to the sample tested. Marin Analytics, LLC makes no claims as to the efficacy, safety or other risks associated with any detected or non-detected levels of any compounds reported herein. This Certificate shall not be reproduced except in full, without the written approval of Marin Analytics, LLC.