



## Black Tie Group LLC

Yuba City, CA 95991  
support@blacktiecbd.net  
888-702-2285

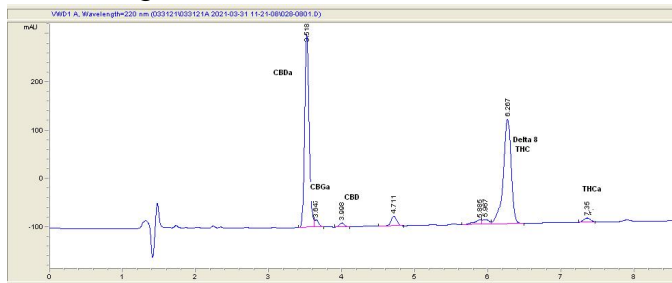
## Sample 214-033121-022

Delta 8 Infused Strawberry Kush  
Sample Submitted: 03-31-2021; Report Date: 03-31-2021

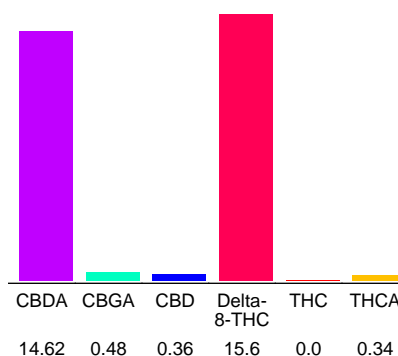
## Delta 8 Infused Strawberry Kush

Plant Material: Flower

### Chromatogram



### Cannabinoid Profile



### Cannabinoid Profile by HPLC

**0.30%**  
Calculated THC Yield

**13.18%**  
Calculated CBD Yield

**31.40%**  
Total Cannabinoids

Cannabinoid	% wt	mg/g
CBDA	14.62	146.2
CBGA	0.48	4.8
CBD	0.36	3.6
Delta-8-THC	15.6	156.0
THC	0.0	0.0
THCA	0.34	3.4
<b>Total Cannabinoids</b>	<b>31.40</b>	<b>314.0</b>
<b>Calculated THC Yield</b>	<b>0.30</b>	<b>2.98</b>
<b>Calculated CBD Yield</b>	<b>13.18</b>	<b>131.82</b>
Calculated Maximum THC Yield = THC + 0.877 * THCA		
Calculated Maximum CBD Yield = CBD + 0.877 * CBDA		

**Marin Analytics, LLC**  
250 Bel Marin Keys Blvd, Suite D4  
Novato, CA 94949

415-936-6477 / Support@MarinAnalytics.com

**Sara Biancalana**  
Chief Scientist

This sample has been tested by Marin Analytics, LLC using valid testing methodologies and a quality system. Values reported relate only to the sample tested. Marin Analytics, LLC makes no claims as to the efficacy, safety or other risks associated with any detected or non-detected levels of any compounds reported herein. This Certificate shall not be reproduced except in full, without the written approval of Marin Analytics, LLC.