



Black Tie

Sample 214-122421-104

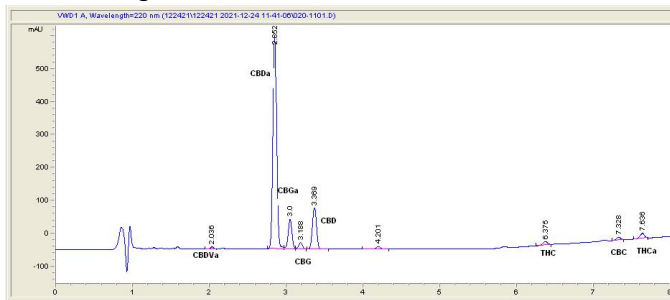
Sour Diesel (2021)

Sample Submitted: 12-24-2021; Report Date: 12-26-2021

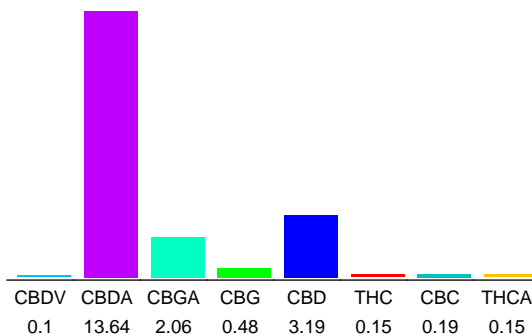
Sour Diesel (2021)

Plant Material: Flower

Chromatogram



Cannabinoid Profile



Cannabinoid Profile by HPLC

0.28%
Calculated THC Yield

15.15%
Calculated CBD Yield

19.96%
Total Cannabinoids

Cannabinoid	% wt	mg/g
CBDV	0.1	1.0
CBDA	13.64	136.4
CBGA	2.06	20.6
CBG	0.48	4.8
CBD	3.19	31.9
THC	0.15	1.5
CBC	0.19	1.9
THCA	0.15	1.5
Total Cannabinoids	19.96	199.6
Calculated THC Yield	0.28	2.82
Calculated CBD Yield	15.15	151.52
Calculated Maximum THC Yield = THC + 0.877 * THCA		
Calculated Maximum CBD Yield = CBD + 0.877 * CBDA		

Marin Analytics, LLC
250 Bel Marin Keys Blvd, Suite D4
Novato, CA 94949
415-936-6477 / sarabiancalana1@gmail.com

Sara Biancalana
Sara Biancalana
Chief Scientist

This sample has been tested by Marin Analytics, LLC using valid testing methodologies and a quality system. Values reported relate only to the sample tested. Marin Analytics, LLC makes no claims as to the efficacy, safety or other risks associated with any detected or non-detected levels of any compounds reported herein. This Certificate shall not be reproduced except in full, without the written approval of Marin Analytics, LLC.