

## Black Tie Group LLC

Yuba City, CA 95991  
support@blacktiecbd.net  
888-702-2285

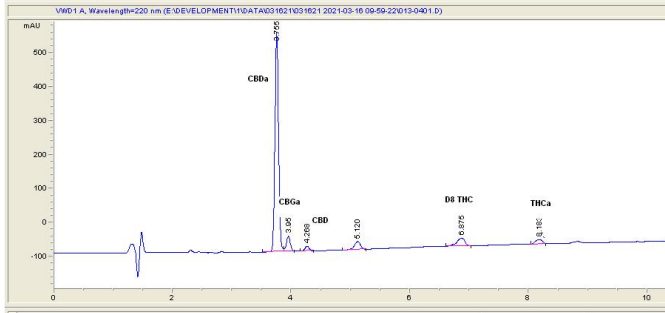
## Sample 214-031621-021

The Jack Delta 8 Infusion  
Sample Submitted: 03-16-2021; Report Date: 03-16-2021

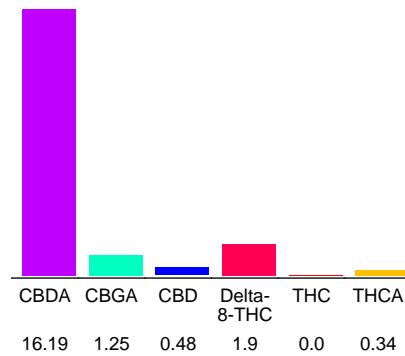
## The Jack Delta 8 Infusion

Plant Material: Flower

### Chromatogram



### Cannabinoid Profile



### Cannabinoid Profile by HPLC

**0.30%**  
Calculated THC Yield

**14.68%**  
Calculated CBD Yield

**20.16%**  
Total Cannabinoids

Cannabinoid	% wt	mg/g
CBDA	16.19	161.9
CBGA	1.25	12.5
CBD	0.48	4.8
Delta-8-THC	1.9	19.0
THC	0.0	0.0
THCA	0.34	3.4
<b>Total Cannabinoids</b>	<b>20.16</b>	<b>201.6</b>
<b>Calculated THC Yield</b>	<b>0.30</b>	<b>2.98</b>
<b>Calculated CBD Yield</b>	<b>14.68</b>	<b>146.79</b>

Calculated Maximum THC Yield = THC + 0.877 \* THCA  
Calculated Maximum CBD Yield = CBD + 0.877 \* CBDA

**Marin Analytics, LLC**  
250 Bel Marin Keys Blvd, Suite D4  
Novato, CA 94949  
415-936-6477 / Support@MarinAnalytics.com

*Sara Biancalana*  
**Sara Biancalana**  
Chief Scientist

This sample has been tested by Marin Analytics, LLC using valid testing methodologies and a quality system. Values reported relate only to the sample tested. Marin Analytics, LLC makes no claims as to the efficacy, safety or other risks associated with any detected or non-detected levels of any compounds reported herein. This Certificate shall not be reproduced except in full, without the written approval of Marin Analytics, LLC.