



Black Tie

Sample 214-090321-068

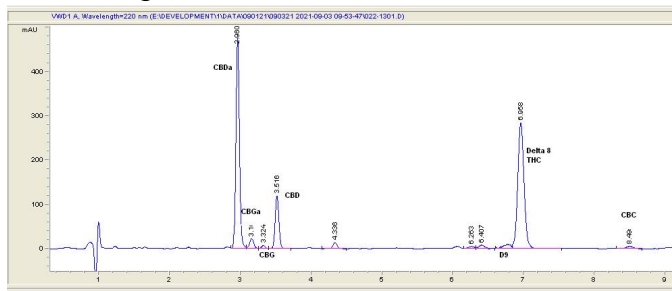
Delta 8 Cherry Pie

Sample Submitted: 09-03-2021; Report Date: 09-04-2021

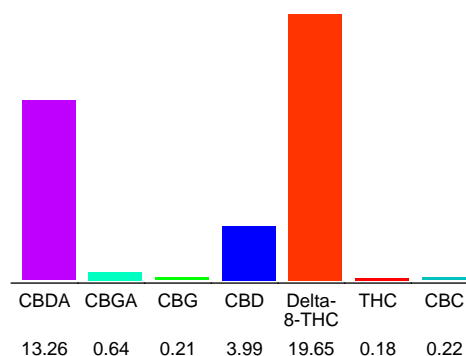
## Delta 8 Cherry Pie

Distillate

### Chromatogram



### Cannabinoid Profile



### Cannabinoid Profile by HPLC

**0.18%**  
Calculated THC Yield

**15.62%**  
Calculated CBD Yield

**38.15%**  
Total Cannabinoids

Cannabinoid	% wt	mg/g
CBDA	13.26	132.6
CBGA	0.64	6.4
CBG	0.21	2.1
CBD	3.99	39.9
Delta-8-THC	19.65	196.5
THC	0.18	1.8
CBC	0.22	2.2
<b>Total Cannabinoids</b>	<b>38.15</b>	<b>381.5</b>
<b>Calculated THC Yield</b>	<b>0.18</b>	<b>1.80</b>
<b>Calculated CBD Yield</b>	<b>15.62</b>	<b>156.19</b>

Calculated Maximum THC Yield = THC + 0.877 \* THCA  
Calculated Maximum CBD Yield = CBD + 0.877 \* CBDA

### Marin Analytics, LLC

250 Bel Marin Keys Blvd, Suite D4  
Novato, CA 94949

415-936-6477 / sarabiancalana1@gmail.com

**Sara Biancalana**  
Chief Scientist

This sample has been tested by Marin Analytics, LLC using valid testing methodologies and a quality system. Values reported relate only to the sample tested. Marin Analytics, LLC makes no claims as to the efficacy, safety or other risks associated with any detected or non-detected levels of any compounds reported herein. This Certificate shall not be reproduced except in full, without the written approval of Marin Analytics, LLC.