



Black Tie

Sample 214-120121-080

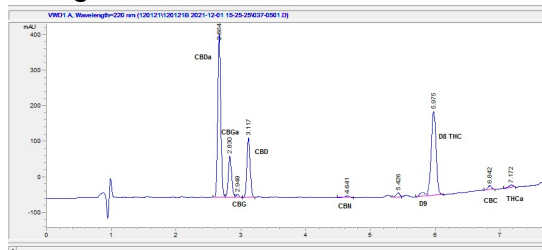
Delta 8 Double Infused Bubba Kush

Sample Submitted: 12-01-2021; Report Date: 12-03-2021

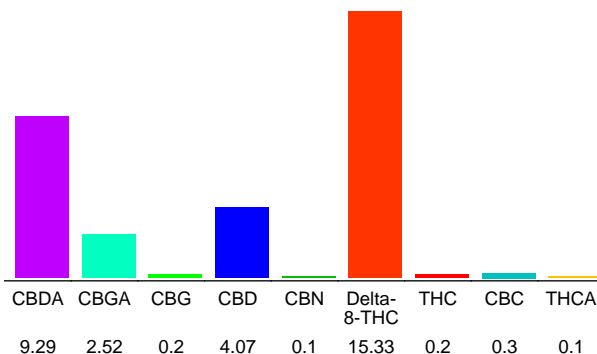
Delta 8 Double Infused Black Tie Kush

Plant Material

Chromatogram



Cannabinoid Profile



Cannabinoid Profile by HPLC

0.29%
Calculated THC Yield

12.22%
Calculated CBD Yield

32.11%
Total Cannabinoids

Cannabinoid	% wt	mg/g
CBDA	9.29	92.9
CBGA	2.52	25.2
CBG	0.2	2.0
CBD	4.07	40.7
CBN	0.1	1.0
Delta-8-THC	15.33	153.3
THC	0.2	2.0
CBC	0.3	3.0
THCA	0.1	1.0
Total Cannabinoids	32.11	321.1
Calculated THC Yield	0.29	2.88
Calculated CBD Yield	12.22	122.17
Calculated Maximum THC Yield = THC + 0.877 * THCA		
Calculated Maximum CBD Yield = CBD + 0.877 * CBDA		

Marin Analytics, LLC
250 Bel Marin Keys Blvd, Suite D4
Novato, CA 94949
415-936-6477 / sarabiancalana1@gmail.com

Sara Biancalana
Sara Biancalana
Chief Scientist

This sample has been tested by Marin Analytics, LLC using valid testing methodologies and a quality system. Values reported relate only to the sample tested. Marin Analytics, LLC makes no claims as to the efficacy, safety or other risks associated with any detected or non-detected levels of any compounds reported herein. This Certificate shall not be reproduced except in full, without the written approval of Marin Analytics, LLC.