



Black Tie

Sample 214-090821-070

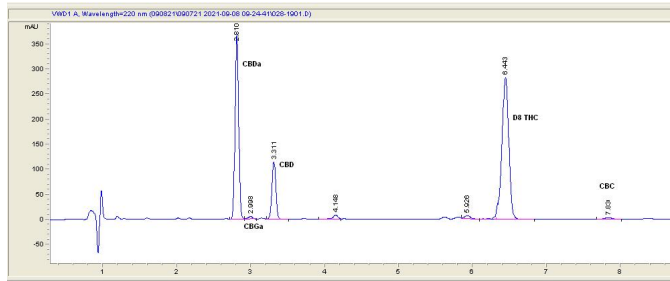
Delta 8 Infused Blueberry Pie

Sample Submitted: 09-08-2021; Report Date: 09-08-2021

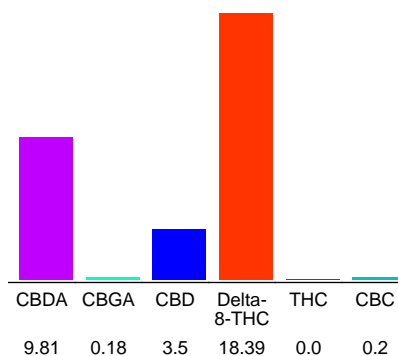
Delta 8 Infused Blueberry Pie

Plant Material: Flower

Chromatogram



Cannabinoid Profile



Cannabinoid Profile by HPLC

0.00%
Calculated THC Yield

12.10%
Calculated CBD Yield

32.08%
Total Cannabinoids

Cannabinoid	% wt	mg/g
CBDA	9.81	98.1
CBGA	0.18	1.8
CBD	3.5	35.0
Delta-8-THC	18.39	183.9
THC	0.0	0.0
CBC	0.2	2.0
Total Cannabinoids	32.08	320.8
Calculated THC Yield	0.00	0.00
Calculated CBD Yield	12.10	121.03

Calculated Maximum THC Yield = $THC + 0.877 * THCA$
 Calculated Maximum CBD Yield = $CBD + 0.877 * CBDA$

Marin Analytics, LLC

250 Bel Marin Keys Blvd, Suite D4
Novato, CA 94949

415-936-6477 / sarabiancalana1@gmail.com

Sara Biancalana
Chief Scientist

This sample has been tested by Marin Analytics, LLC using valid testing methodologies and a quality system. Values reported relate only to the sample tested. Marin Analytics, LLC makes no claims as to the efficacy, safety or other risks associated with any detected or non-detected levels of any compounds reported herein. This Certificate shall not be reproduced except in full, without the written approval of Marin Analytics, LLC.